

HIGHRISE
HR
EUROPEAN STANDARDS

BS6 
Approved

HIGHRISE INTERNATIONAL PVT LTD

C N G S E Q U E N T I A L & C O N V E N T I O N A L K I T S



CNG

Let's **SAVE**
the **world**
together

Go For CNG....

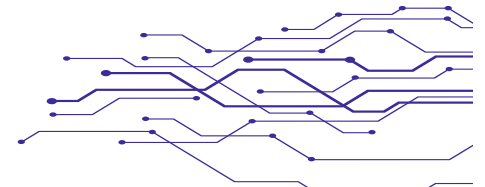


APPROVED BY

©49 110R-0400000200C ©49 67R-0201000200C ©49 10R-0501011700C



Nationally and Internationally Certified for Quality Assurance





Highrise International Pvt. Ltd

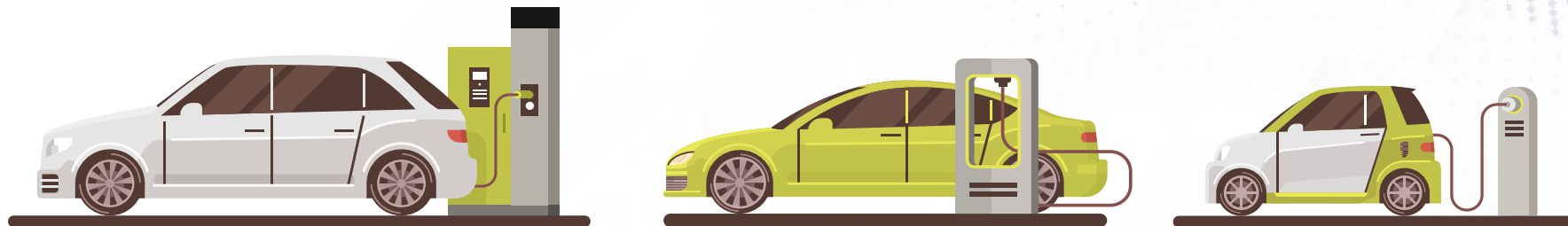
Deals in CNG Sequential and Conventional Kits in India. We are located in Center of Delhi and have a dealer network all over India and still expanding. We are with the highly skilled (R.D) and professional team to developed best and perfect suitable Sequential System for the Indian Market. Our R&D team keeps ourselves update and upgrade with International CNG Market.

We Highrise's are the importer of CNG Sequential reducer (HIGHRISE), VCA & ICAT approved, CNG Injector Rail (HR-04) approved by ICAT, CNG High Pressure Pipe approved by ICAT, CNG Electronic Control Unit and CNG Pressure Gauge is approved by Luxembourg Europe

The Highrise brand is popular among its customers for its design and structure featured on the reliability and ease of installation. Company aims to reach to all its customers and its endeavor.

Why Choose Us

Few of the factors that make us the first choice ahead of our competitors are: Exceptional Staff | Premium Staff
Affordable Pricing High Industry Standards.



CNG KITS INSTALLATION TECHNICAL STATISTICS YOU MUST KNOW



YEARS OF EXPERIENCE **15**

WELL TRAINED EMPLOYEES **50**

SATISFIED DEALERS **1000**

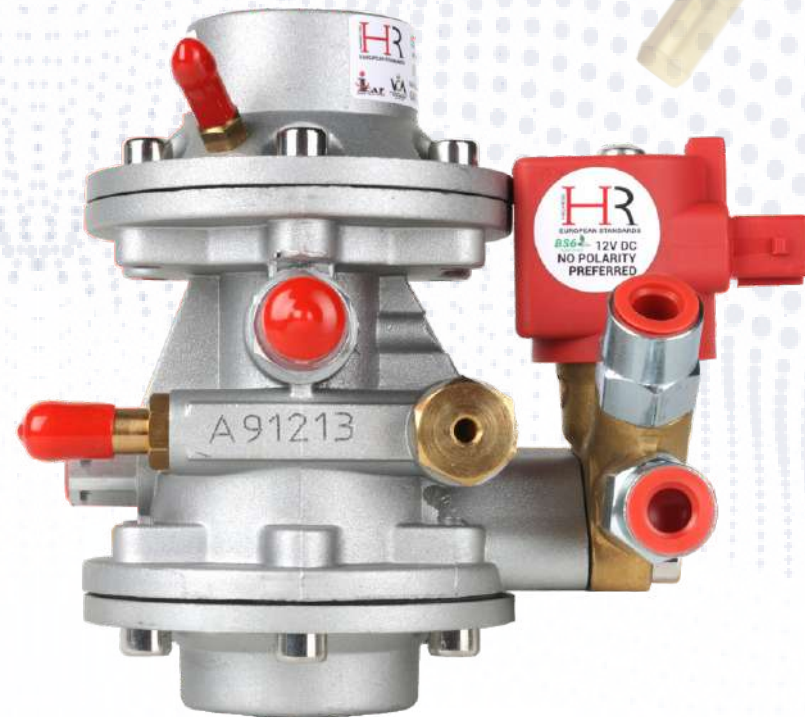
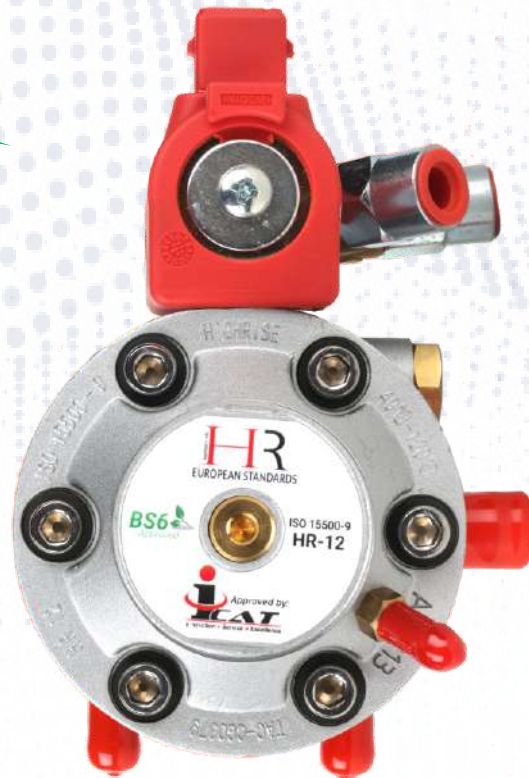
HIGHRISE

CNG KIT IS APPROVED FOR RETRO FITMENT
IN THE FOLLOWING VEHICLES



HIGHRISE CNG SEQUENTIAL REDUCER HR 12

HR-12 CNG Sequential Reducer: CNG Sequential Reducer is an important part of CNG Kit. HIGHRISE CNG reducer is a two-stage pressure reducer for sequential injection which provides a constant outlet flow in all Environment conditions. The outlet pressure of HighRise reducer is adjustable to obtain the best performance and is provided with an adjustable fitting that has also the connection for pressure manometer.



APPROVED BY

©49 110R-040000200C ©49 67R-0201000200C ©49 10R-0501011700C



Nationally and Internationally Certified for Quality Assurance

HIGHRISE 6/8 CYL ELECTRONIC CONTROL UNIT (ECU)

Advantages of 6/8 CYL ECU:

1. 32bit DSP singlechip control, control accuracy up to 0.01ms
2. A variety of gas injectors and sensors (level sensor, temperature of pressure reducer temperature) to choose
3. Suitable for multi-point sequential injection and grouped injection vehicles, compatible with EU4 EU5 EU6 vehicles
4. There are two gas correction modes, MAP and K Main A, more gas injection strategies, and easier gas calibration.
5. With fuel and gas injector detection and gas system self-diagnosis function, more convenient detection of gas system.



APPROVED BY

E49 110R-040000200C E49 67R-0201000200C E49 10R-0501011700C



Nationally and Internationally Certified for Quality Assurance

Ex-HIGHRISE OBD-2 8 INJECTOR ECU

The 5.0OBD 4 cylinder with 8pcs injectors dual-fuel ECU is suitable for 4 cylinder with 4pcs injectors and 8pcs injectors dual-fuel vehicles. A 32Bit microcontroller and advanced engine control design to ensure air, fuel, leak diagnosis, OBD and emission control (Euro VI). The innovative integration of all 8pcs injectors simulations and controls into the ECU reduces the installation difficulty of external simulators and effectively increases reliability. ECU collects the fuel injection signals from 8pcs injectors at the same time and uses Ex-HIGHRISE patented algorithm to optimize the performance of the dual-fuel system, further improving the acceleration performance and idling stability of the vehicle.



APPROVED BY

E49 110R-040000200C E49 67R-0201000200C E49 10R-0501011700C



Nationally and Internationally Certified for Quality Assurance



ECU EX HIGHRISE OBD 2

EX-HIGHRISE OBD-2 gas injection system – applicated for 3cyl /4cyl. engine. Hardware is develop and manufacture on high quality standard TS16949 with ECE 67R-010311 and 110R-000166 certification. Function EX-HIGHRISE Professional design for OEM “0km” automotive. Can with OBD II function. and real-time calibration keeps gas vehicle in perfect condition in different drive surrounding and mileage, at the same time satisfied with EURO IV displacement standard. Very professional PC interface saves much time for user.



APPROVED BY

E49 110R-040000200C E49 67R-0201000200C E49 10R-0501011700C



Nationally and Internationally Certified for Quality Assurance

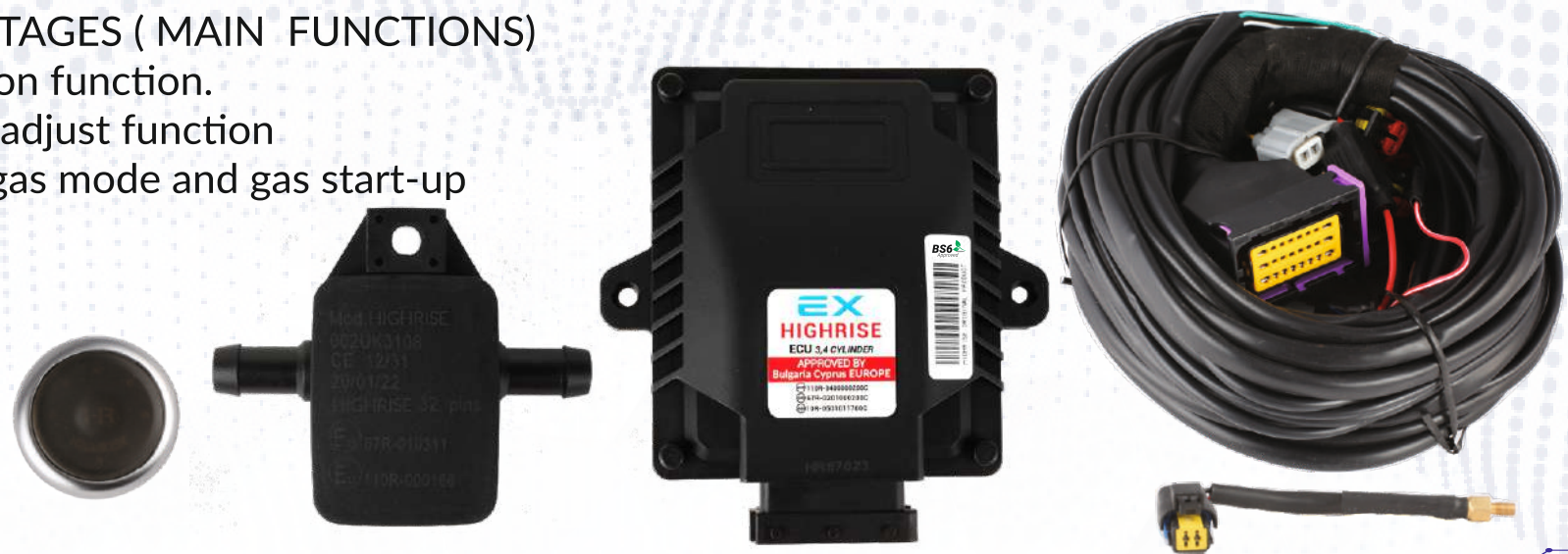
ECU EX HIGHRISE -OBD 1

SYSTEM INTRODUCTIONS

OBD 1 Smart System is a gas sequential injection gas supply system. When the system works, the gas ECU takes the fuel injection signal from original vehicle as the basic signal, and collects the parameters of the engine coiling water temperature, gas pressure and other parts at the same time to decide the final gas injection time and gas rail injector supply gas to the corresponding engine cylinder. Within the permitted scope of engine cylinder volume, the system will provide gas which is equal to the energy of the gasoline when the switch is in the gas position, the gas ECU will automatically defect the conversion conditions which are already stored in the ECU. When the condition is met, system will switch to the gas. At this time, the gasoline injection nozzle is cut off, and the gas system ECU drives the gas rail injector to start working.

SYSTEM ADVANTAGES (MAIN FUNCTIONS)

- 01 Auto-calibration function.
- 02 Gas Transient adjust function
- 03 Petrol mode, gas mode and gas start-up



APPROVED BY

©E49 110R-0400000200C ©E49 67R-0201000200C ©E49 10R-0501011700C



Nationally and Internationally Certified for Quality Assurance

HIGHRISE ADVANCED TOUCH SWITCH

The Advance Touch Switch is the part of the CNG / LPG Electronic Circuit Unit and is installed in the vehicle dashboard near to the driving seat.

How Switch Works The car starts (ignition), the orange light is ON indicating the car is on petrol, As we press accelerator (rpm increases), it automatically switches to CNG as it reaches the set rpm(programmed i.e. 1200 rpm) Greenlights become visible as the car is now running on CNG. The number of lights indicates the quantity of CNG available in the gas cylinder. Even if CNG is still available in a gas cylinder and you want to switch into petrol, then just Touch the switch once. It will be switched to petrol. You will not feel any knocking during fuel conversions. **End of CNG Indication** When the red light becomes visible, it means that CNG is in its last phase. It will still run a few Km's.



APPROVED BY

E49 110R-040000200C E49 67R-0201000200C E49 10R-0501011700C

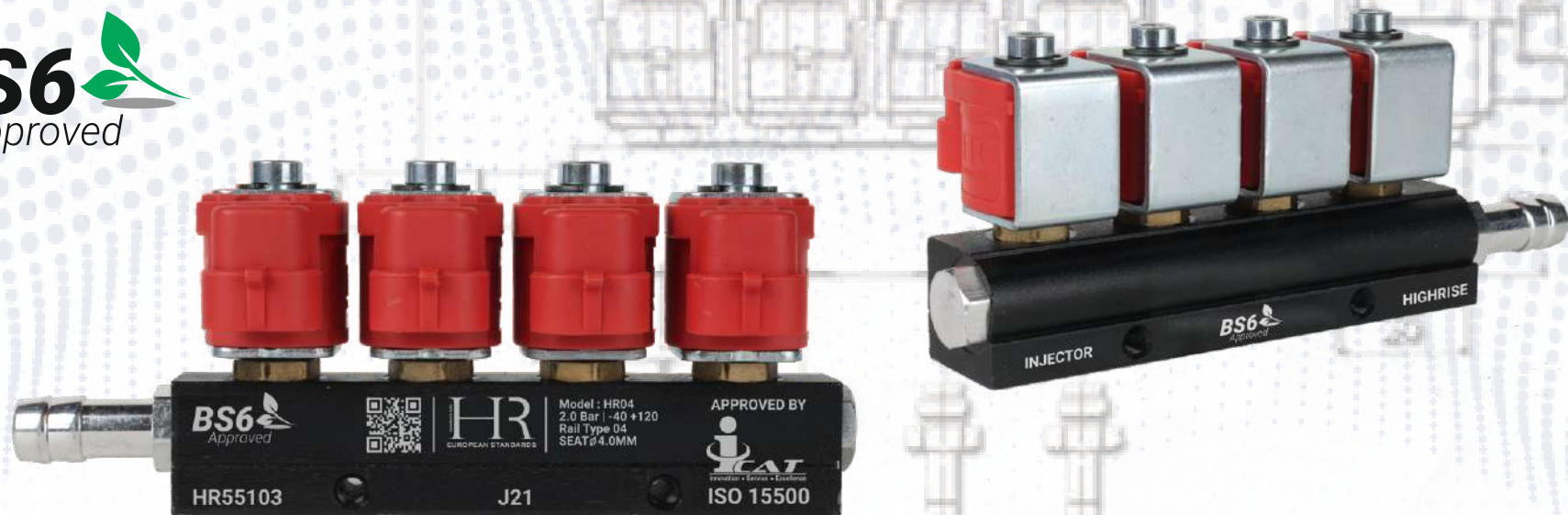


Nationally and Internationally Certified for Quality Assurance

HIGHRISE INJECTOR RAIL HR04

The HR04 injector Rail is to inject the controlled quantity of CNG Fuel at specific interval of time (as programmed in ECU). it can be supplied with 3 Ohm coil and is compatible with the majority of the ECUs distributed in the markets.

it is homologated in accordance with ISO 15500 standards and approved by ICAT . HR04 injector RAIL has been designed to allow easy installation and maintenance: it does not require the setting of the solenoid core, assuring the performance of the injector rail also after the maintenance, without difficult processes and dedicated setting machinery.



APPROVED BY

E49 110R-040000200C E49 67R-0201000200C E49 10R-0501011700C



Nationally and Internationally Certified for Quality Assurance



HIGHRISE 360 LPG CNG FILTER 12MM IN/OUT

HIGHRISE Ultra 360° is a brand new improved filter with oil separation; effective filtration combined with ergonomics.

The original construction of the filter ensures very effective filtration. Gas entering the filter is set in rotary motion and directed towards the bottom. Thanks to the rotary motion, centrifugal force and inertial force, particular and liquid matters are centrifuged and kept on the bottom. Additionally, the filter cartridge cleans the stream of gas heading upwards from the remaining tiny impurities.

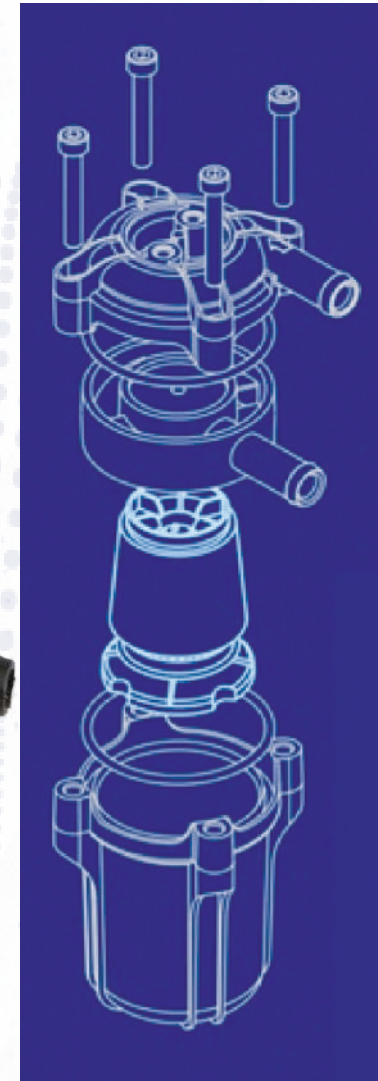
HIGHRISE 360° was designed especially for the convenience of the installers. The inlet and outlet are placed on separate elements of filter cover, which results in easy angle regulation between them. Because of such solution the installer can easily freely place the filter in the underbonnet area.

TECHNICAL SPECIFICATION

- Cover material: polyamide and glass composite
- Filtrating material: polyester
- Inlet and outlet diameter: 12mm
- Classification: CLASS#2
- Classifying pressure: 4,5 bar
- Working temperature: -20÷120°C

DIMENSIONS

60 x 60 (110 when the inlet and outlet are set on 180°) x 106m



APPROVED BY

E49 110R-0400000200C E49 67R-0201000200C E49 10R-0501011700C

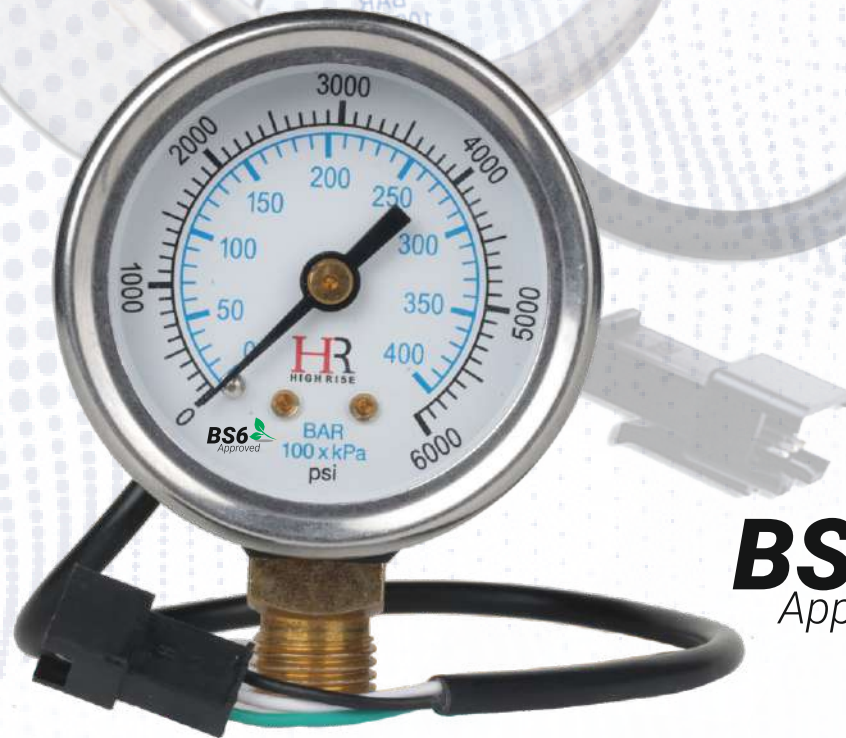


Nationally and Internationally Certified for Quality Assurance



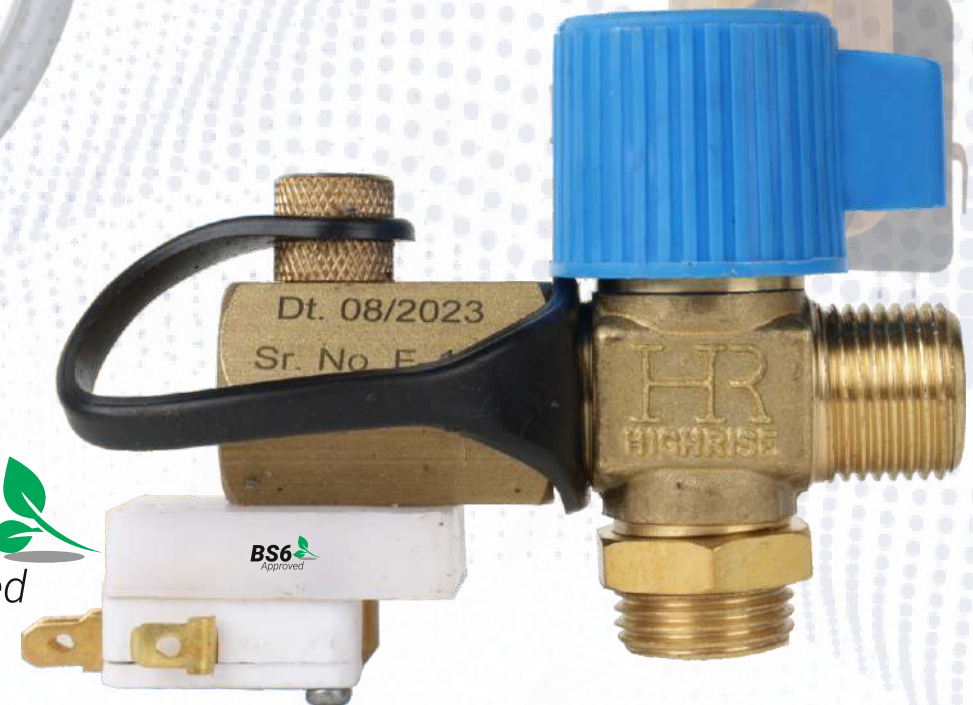
HIGHRISE CNG PRESSURE GAUGE

Description The CNG Gauge or CNG pressure sensor provides a linear electronic signal proportional to gas pressure. The device uses an analogical indication for directly reading the pressure of the gas in the tank.



HIGHRISE REFILLING VALVE

Filling Valve is the valve through which the CNG is refilled in the gas cylinder. Highrise International uses filling valves that matches with international standard and matches the world's class best quality.



BS6
Approved

APPROVED BY



©E49 110R-0400000200C ©E49 67R-0201000200C ©E49 10R-0501011700C



Nationally and Internationally Certified for Quality Assurance

HIGHRISE CNG STEEL TUBE HP 01

CNG Steel Tube is the pipe through which gas from the cylinder comes to the reducer. The CNG Steel Tube is approx 5.9 mtr in length and comes from the cylinder compartment to the Engine compartment. Highrise International provides the best quality steel Tubes which are extensively tested in different environments and meets international standard ISO 15500.



HIGHRISE LOW PRESSURE PIPE

- SIZE : Φ 5.5 MM
- SIZE : Φ 8.0 MM
- SIZE : Φ 10.5 MM
- SIZE : Φ 19 MM



APPROVED BY

©49 110R-040000200C ©49 67R-0201000200C ©49 10R-0501011700C

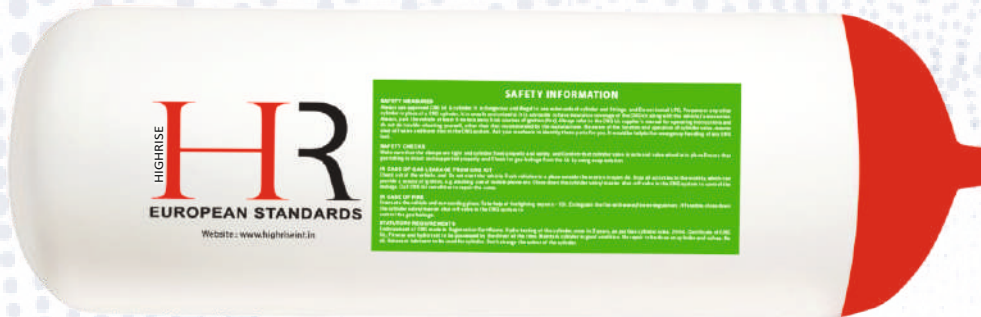


Nationally and Internationally Certified for Quality Assurance



CNG CYLINDER

The CNG (Compressed Natural Gas) Kits offered by us are sophisticated equipment and have gained prominence among the clients. The CNG Kits have a robust construction and hence, are highly durable. Clients can avail the high efficiency CNG Kits from us at nominal market prices. Reducer gas output pressure: 2 Bar Working pressure: 200 Bar



APPROVED BY

ISO 9001:2008 110R-0400000200C ISO 9001:2008 67R-0201000200C ISO 9001:2008 10R-0501011700C



Nationally and Internationally Certified for Quality Assurance



HIGHRISE

EUROPEAN STANDARDS

स्वच्छ भारत
एक कदम स्वच्छता की ओर

Web : www.highriseint.in

CHOOSE HIGHRISE CNG GAS KIT IN YOUR VEHICLE TO RESTORE NATURAL ECOSYSTEM

Electronic Components Approved by Luxembourg Europe..
Highrise CNG Sequential Reducer Approved by VCA United Kingdom

BS6 
Approved

**CNG SEQUENTIAL KIT
INSTALLATION LAYOUT**
EASY TO INSTALL MORE MILEAGE ENVIRONMENT FRIENDLY



CNG Cylinder



Pressure Gauge



Refilling Valve



MAP Sensor



Rail Injector



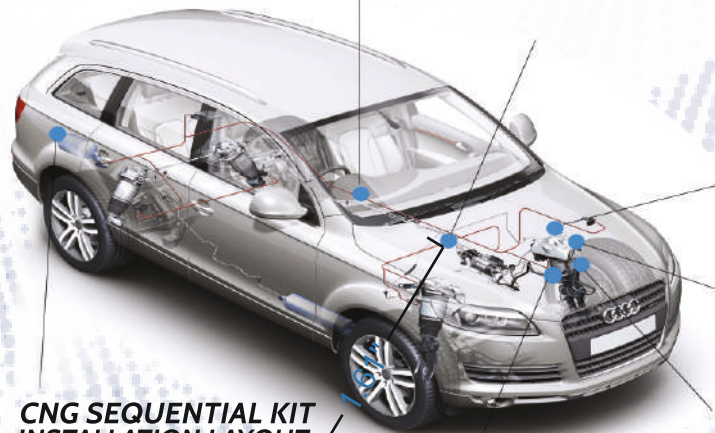
Sequential Reducer



Electronic Control Unit



Touch Switch



Highrise International Pvt. Ltd



APPROVED BY

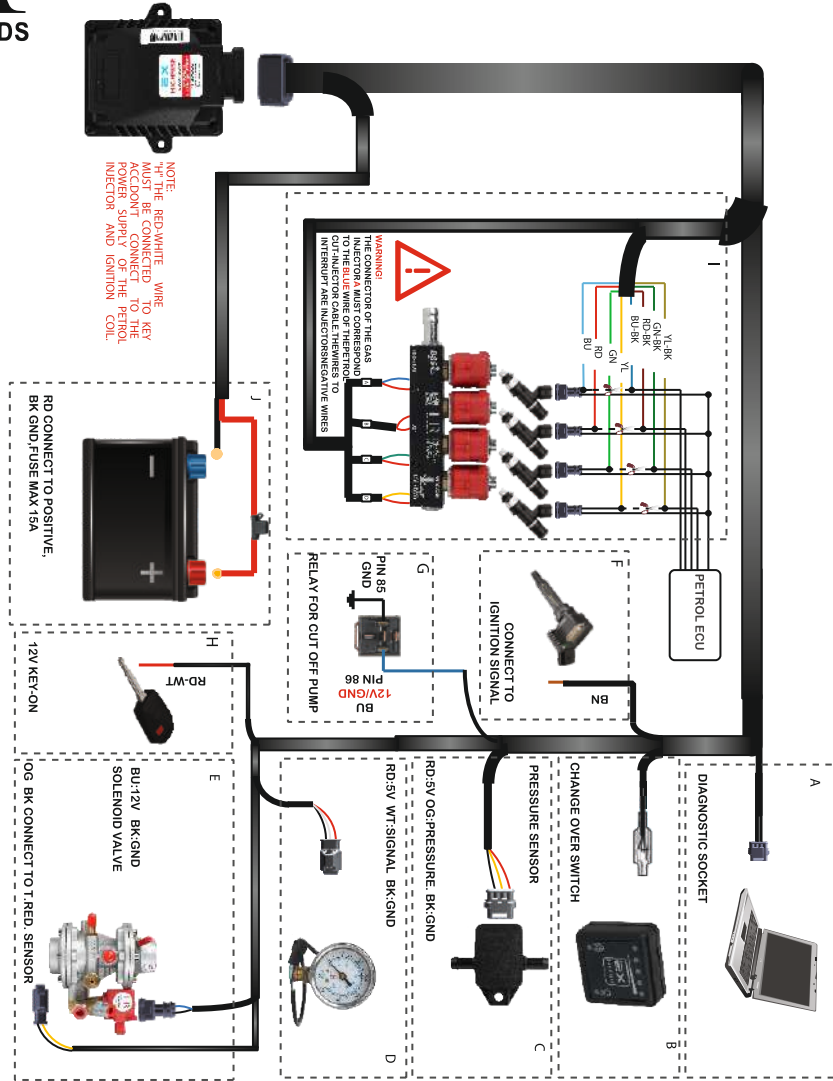
©49 110R-040000200C ©49 67R-0201000200C ©49 10R-0501011700C



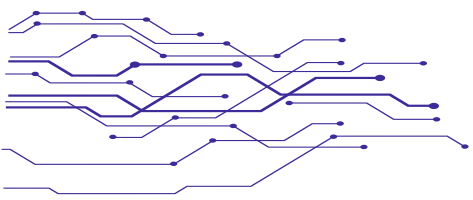
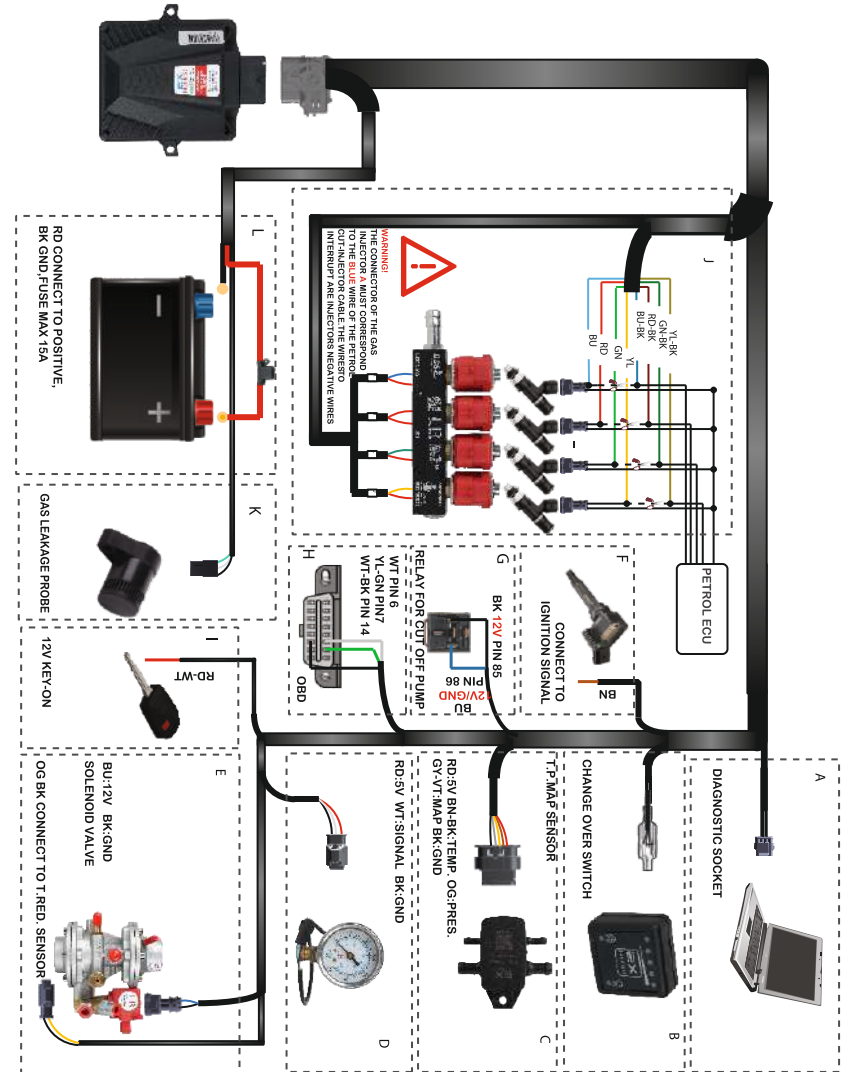
Nationally and Internationally Certified for Quality Assurance

Let's **SAVE**
the **world**
together
Go For GREEN...

HIGHRISE OBD-1 WIRING DIAGRAM



HIGHRISE OBD 2 ECU WIRING DIAGRAM

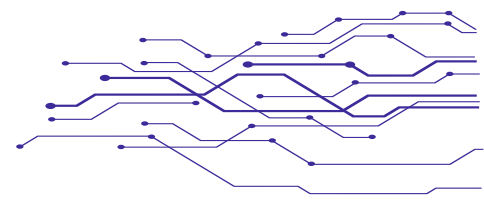


APPROVED BY

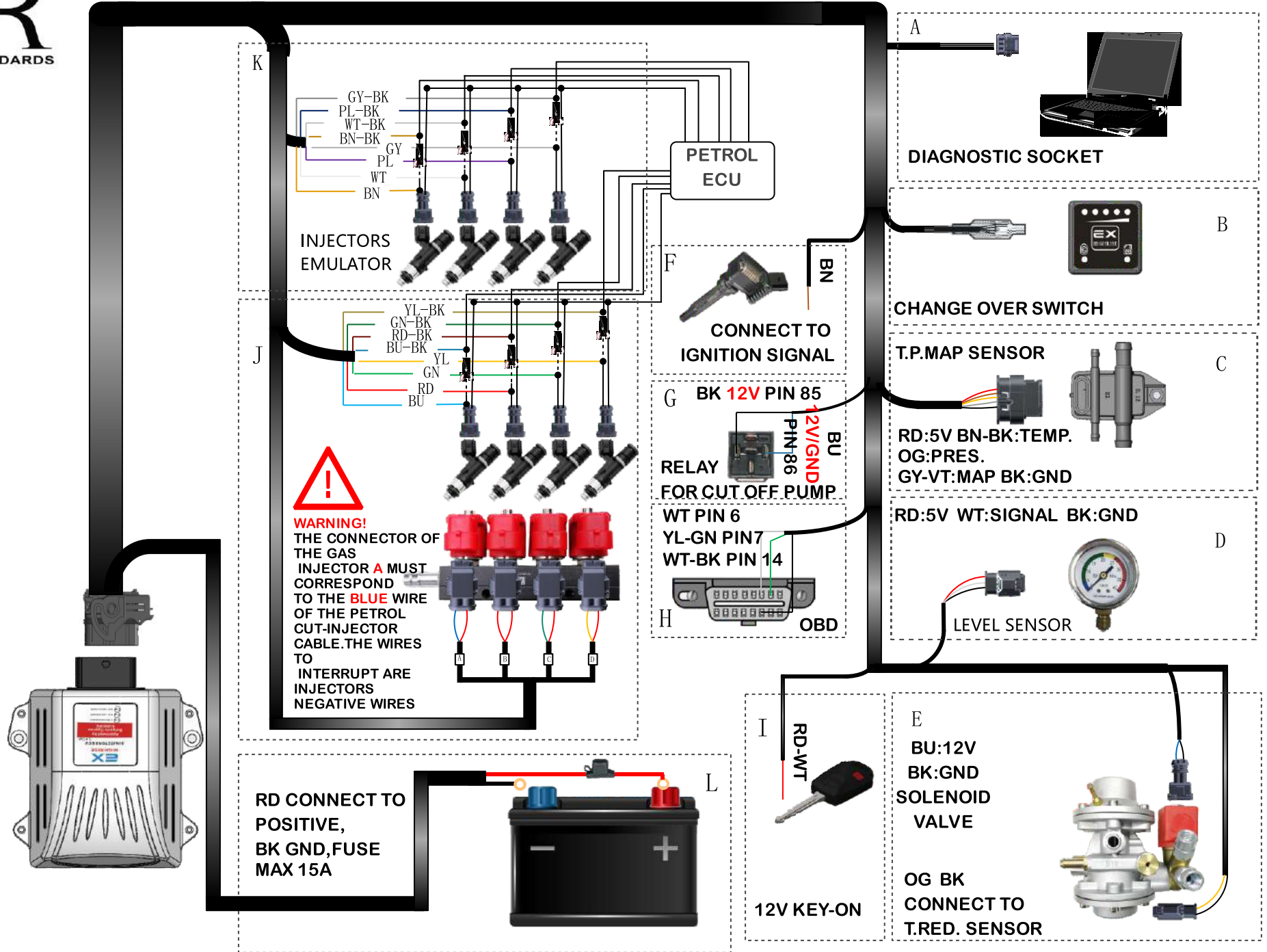
©49 110R-040000200C ©49 67R-0201000200C ©49 10R-0501011700C



Nationally and Internationally Certified for Quality Assurance



EX HIGHRISE OBD2 8 INJECTOR CONNECTION DIAGRAM



DO'S WHILE USING CNG

1. The vehicles operating on CNG must comply with the required conditions as contained in the central motor vehicles rules
2. Before installing the CNG kit, it is required to ensure that the workshop is authorized
3. You should have the approved Kit and cylinder that goes well with the make of vehicle.
4. You should have thorough leak of the gas system. In case of Leakage, close cylinder Valve; fitted on CNG cylinder. Don't drive the vehicle on CNG till you get the leakage test from authorized fitment center. It is worth pointing out that CNG is lighter than air and in the unlikely event of a leak from piping or container the gas will dissipate upwards quite quickly. In case of petrol and LPG, the vapour given off is heavier than air and will tend to pool near the ground.
5. You should collect the installer certificate from the workshop and ensure to endorse the CNG or bi-fuel mode in Registration Certificate issued by RTO.
6. Get the CNG cylinder checked every Three (3) years from the date of last testing / retesting of cylinder by government authorized CNG cylinder testing agency
7. Switch "OFF" engine while fuel filling
8. The CNG kit installed in the vehicle should be insured along with vehicle accessories. The Motorist should notify the insurance company to provide insurance on the CNG system, for which additional premium may be charged by the insurance company. Motorists should take the insurance cover for the additional CNG kit system.
9. As per present government regulation the pollution checks and pollution certificate is mandatory even after converting the vehicle on CNG.

DONT'S WHILE USING CNG

1. You should not purchase Components from various sources and do not install the kit yourself.
2. You should not modify or improvise the kit and unauthorized workshops.
3. You should not install on LPG, Propane in place of CNG cylinder.
4. You should not do Filling of LPG, Propane or other fuel in a CNG Cylinder.
5. You should ensure that there are no passengers on board at a time of filling of CNG.
6. You should not ignore any signs of gas leakage if observed by you.
7. Avoid carrying inflammable material near the CNG cylinder.



HIGHRISE
HR
EUROPEAN STANDARDS



WARRANTY CARD

Invoice No. Date of (Fitment).....
 Customer NamePhone No.
 Address.....
 Vehicle No. on which kit fitted.....
 Kilometer Reading at the time of fitment
 Kit Box No.ECU No.....

HIGHRISE Authorised Dealer Copy

Stamp & Sign.

Invoice No. Date of (Fitment).....
 Customer NamePhone No.
 Address.....
 Vehicle No. on which kit fitted.....
 Kilometer Reading at the time of fitment
 Kit Box No.ECU No.....

Customer Copy

Stamp & Sign



APPROVED BY

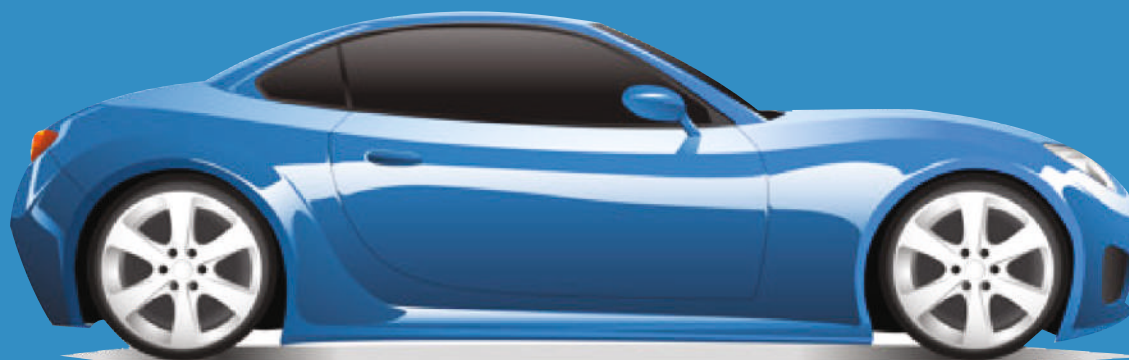
©49 110R-040000200C ©49 67R-0201000200C ©49 10R-0501011700C



Nationally and Internationally Certified for Quality Assurance




BS6 
Approved



Thanks for Choosing

HIGHRISE
HR
EUROPEAN STANDARDS

HIGHRISE INTERNATIONAL PVT. LTD

 +011-2519 3239
+91 9350041498

 7 Amar Park New Rohtak Road Near
Ashoka Park Main Metro Station, Delhi 110035 -India

 highrise31@gmail.com
highriseint.in

follow us on

